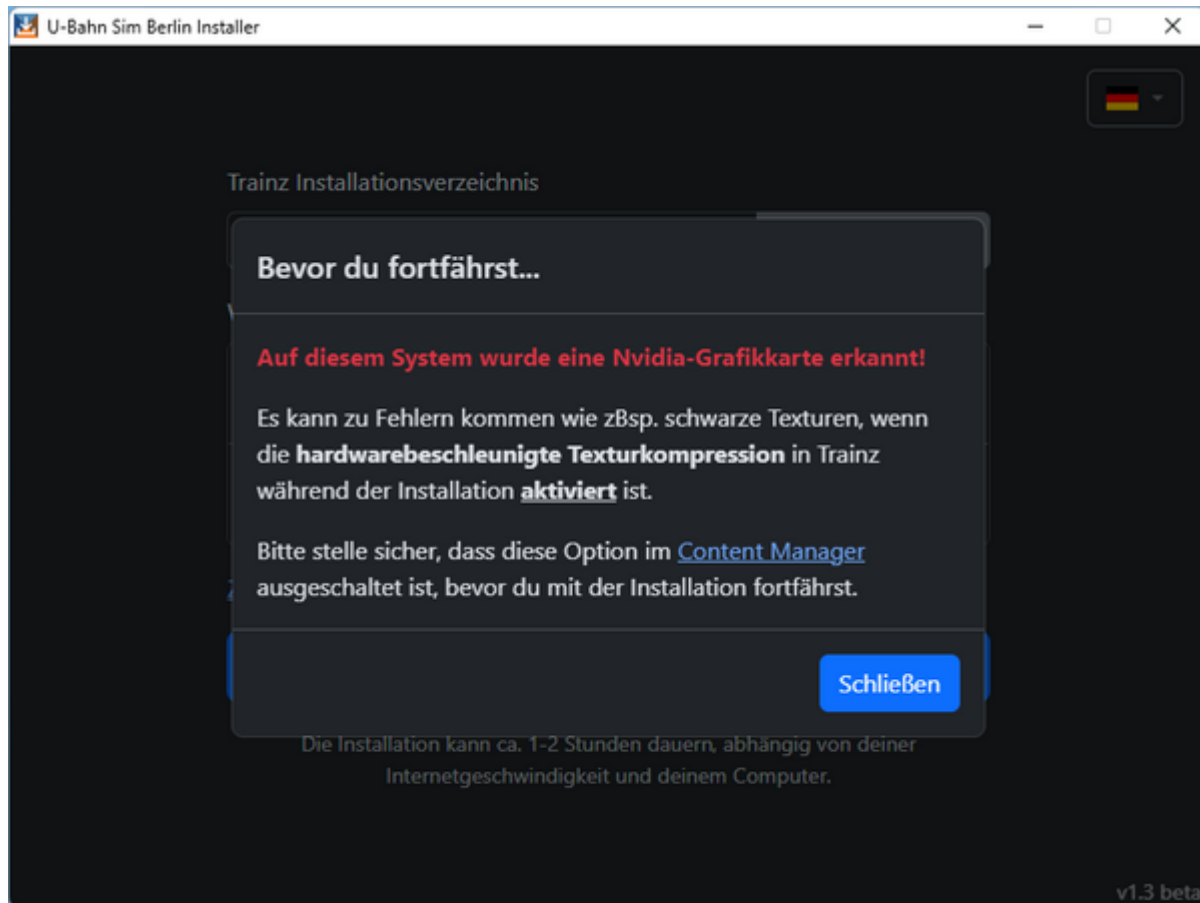


# Issues with NVIDIA Graphics Cards

If you own an NVIDIA graphics card and want to install the U-Bahn Sim Berlin expansion, you will encounter the following warning message in the installer:

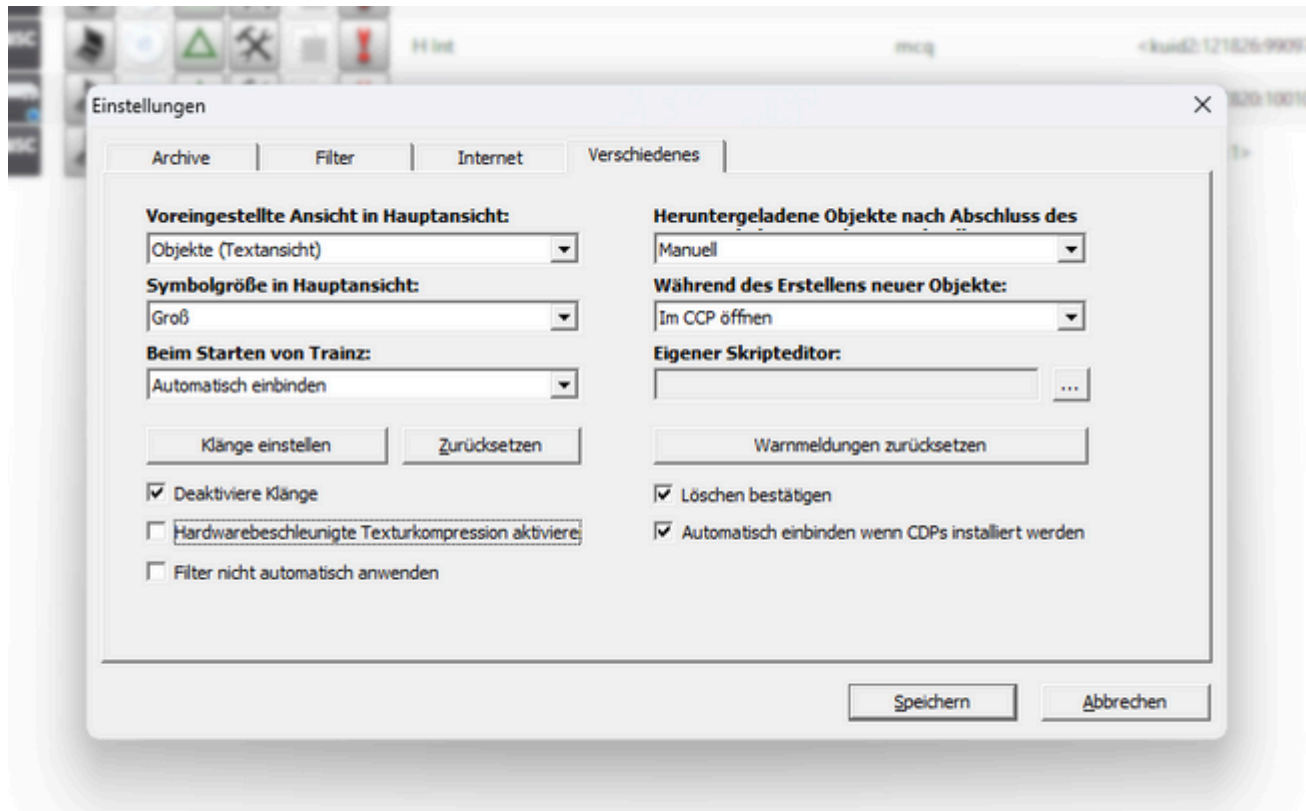


Hardware-accelerated texture compression **must** be disabled **before installation** when using NVIDIA graphics cards. Otherwise, as already described in the installer, it may result in black textures.

To disable hardware-accelerated texture compression, first open the Content Manager. This can be done in one of three ways:

- via the blue-highlighted button in the installer,
- by opening the Trainz Launcher and clicking on Content, or
- by launching ContentManager.exe in the main Trainz directory under the „bin“ subfolder

When opening the Content Manager for the first time, you will be greeted by the settings menu. If this does not happen, you can also access the same menu via File → Settings at the top.



Navigate to the „Miscellaneous“ tab, then **you must disable** the option „Enable hardware-accelerated texture compression.“

Click „Save“ to store the settings – afterward, the Content Manager must be closed again.



### Attention!

Before continuing with the installation, wait approximately 1 minute after closing the Content Manager.

Otherwise, installation issues may occur.

## Video

The following video is from PTP2 but shows exactly the same steps as described above at the beginning:

[manuelle-installation-ntp2.mp4](#)

From:  
<https://wiki.u7-trainz.de/> - U-Bahn Sim Berlin Wiki

Permanent link:  
<https://wiki.u7-trainz.de/en/handbuch/trainz/installation/nvidia>

Last update: **2025/06/24 02:35**



