

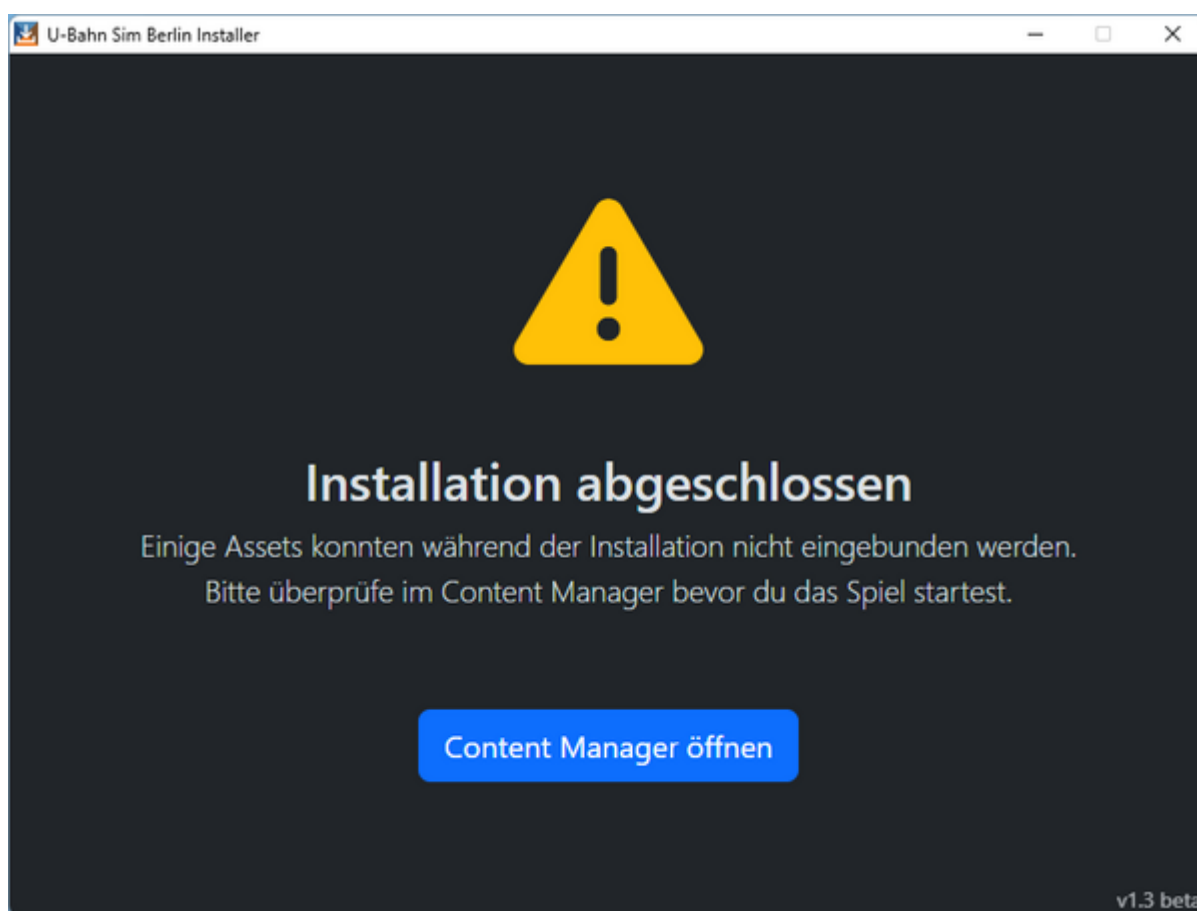
Steps after installation

After installing U-Bahn Sim Berlin, some settings need to be checked to ensure the expansion works without issues.

Some assets could not be integrated during installation

If the final screen displays a success message with a green checkmark instead, this step can be skipped.

At the end of installation, you may encounter the following message:



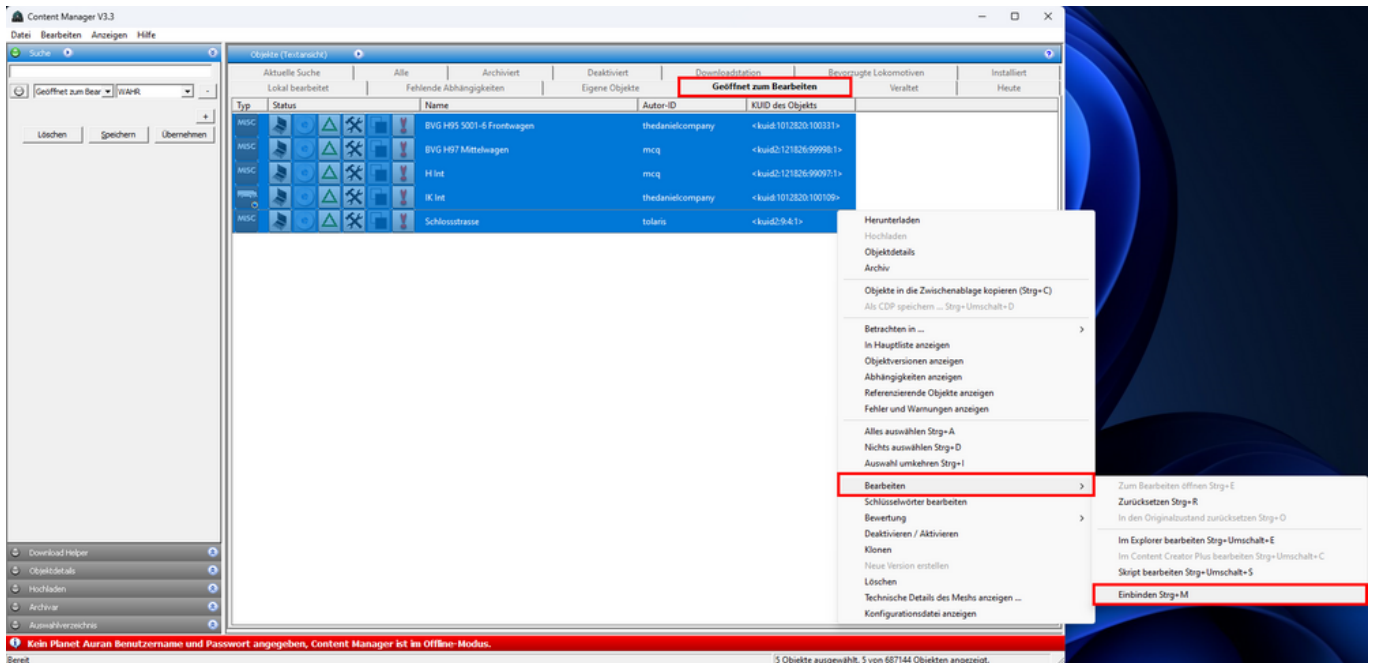
If this message appears, you should first open the Content Manager.

This can be done in one of three ways:

- via the blue button in the installer,
- open the Trainz Launcher, then click on Content, or
- launch the ContentManager.exe from the "bin" subfolder in the Trainz directory


Once in the Content Manager has opened, switch to the „Open for Edit“ tab. There, all listed items must be selected (Shift+Left Click or CTRL+A). Then right-click and select „Edit“ → „Commit“ from the context menu.

Alternatively, you can press **CTRL**+**M** to start the commit process.

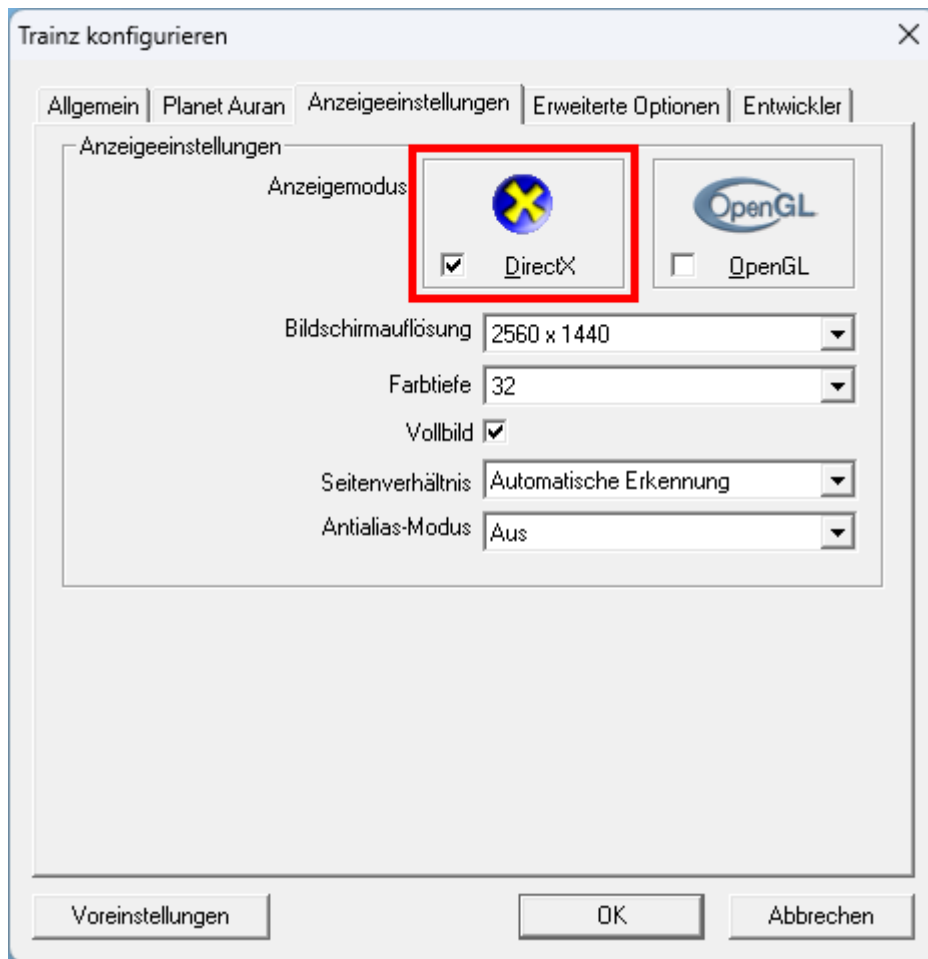


It may happen that committing fails the first time.
In this case, repeat the steps above until the list in the „Open for Edit“ tab is empty.

Switch display mode to DirectX

In Trainz 2009, you can choose between the  **graphics interfaces** DirectX and OpenGL.
To ensure U-Bahn Sim Berlin works properly, DirectX is recommended.
Using OpenGL may cause graphical glitches, such as blue trains or upside-down departure mirrors.

To change this setting, open the Trainz Launcher and click on „Options“.
Navigate to the „Display Settings“ tab and switch the display mode to DirectX.



Enable compatibility mode for legacy content

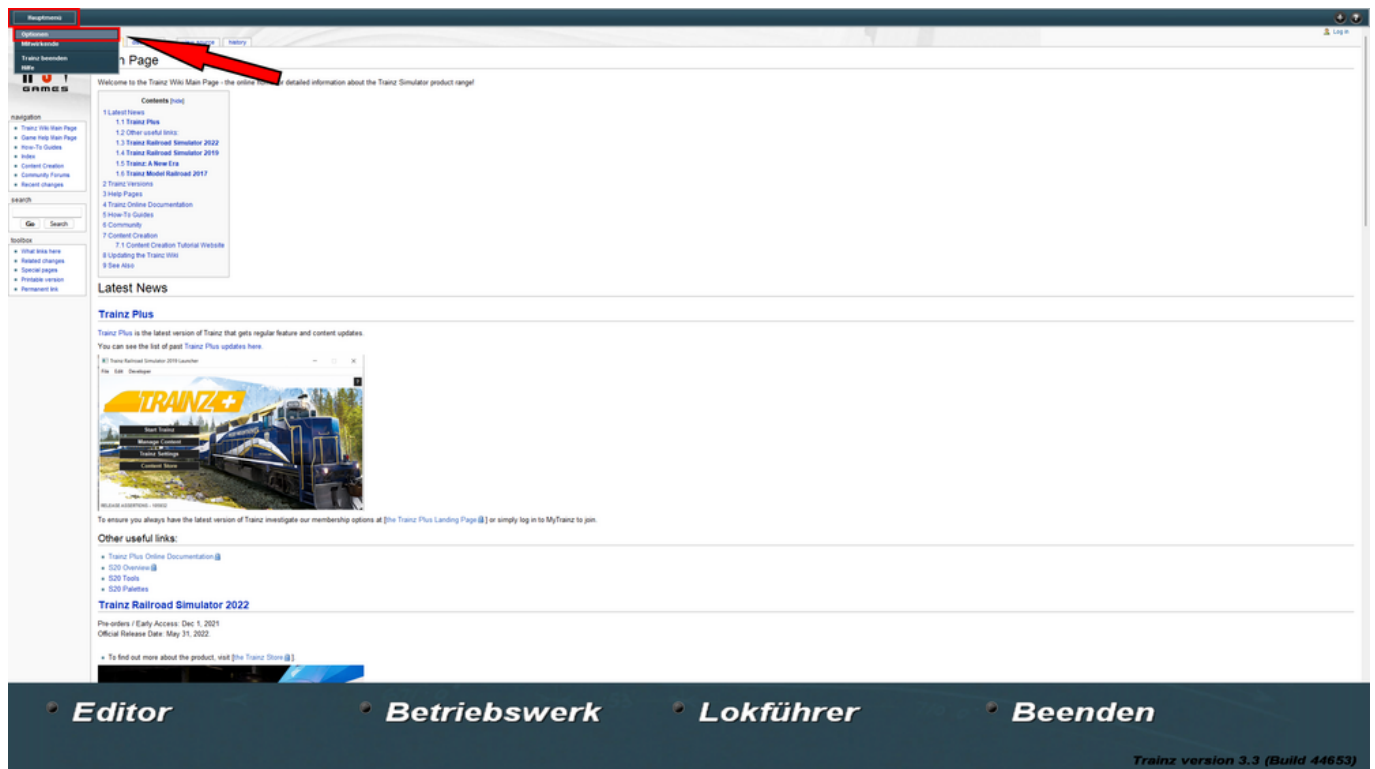
Since the U-Bahn Sim Berlin expansion was originally created for Trainz 2004 and ported to Trainz 2009, some objects are not fully compatible.

As a result, some tunnel objects and stations may not appear in-game.

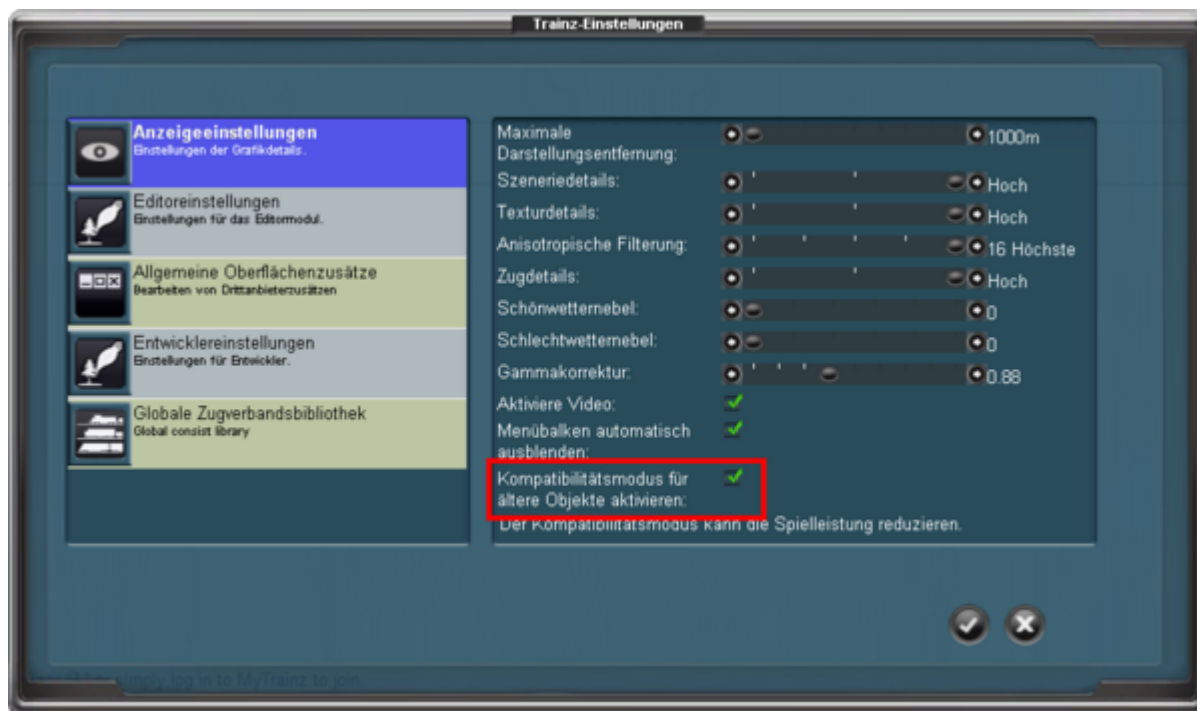
To address this, you can enable the „Compatibility mode for older content“ in Trainz.

First, start the game.

Click the „Main Menu“ button in the upper left corner, then select „Options“.



In the options menu, go to the „Display Settings“ tab and activate „Enable compatibility mode for older content“.



After saving the changed settings, the game can now be played without issues.

From:

<https://wiki.u7-trainz.de/> - **U-Bahn Sim Berlin Wiki**

Permanent link:

https://wiki.u7-trainz.de/en/handbuch/trainz/installation/post_installation

Last update: **2025/06/24 02:35**

